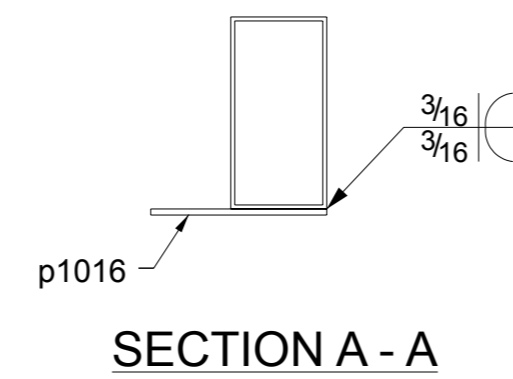
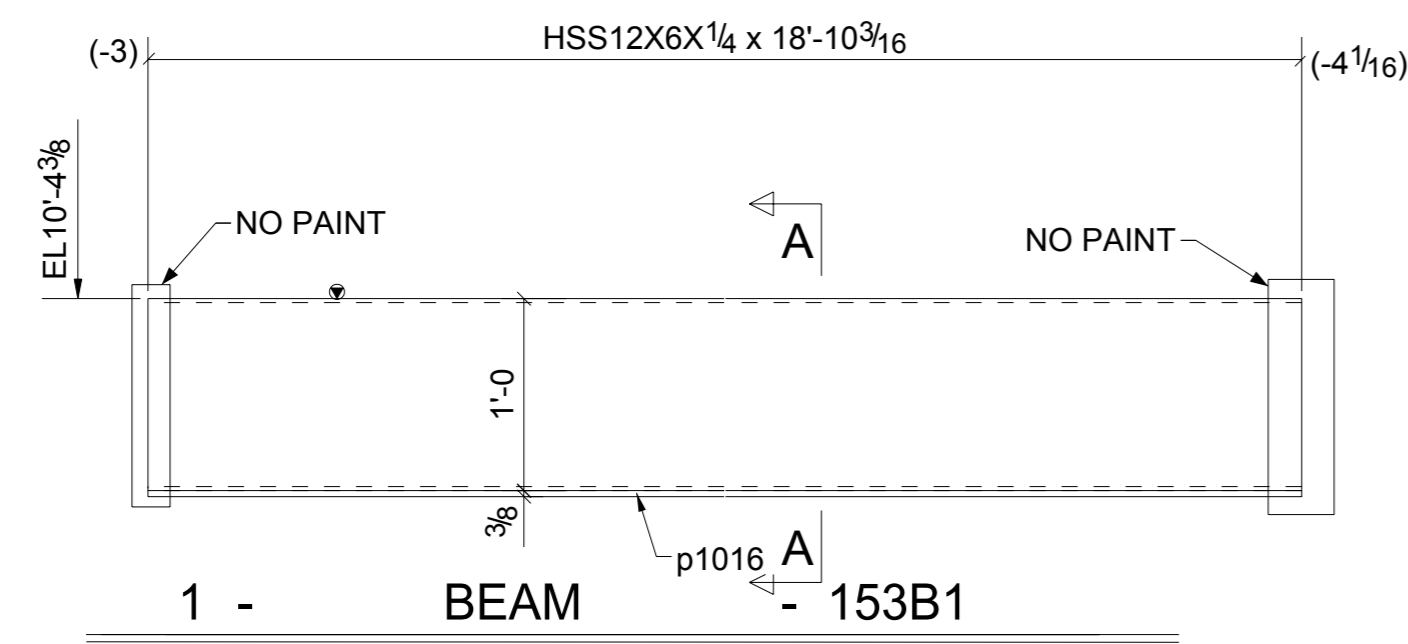
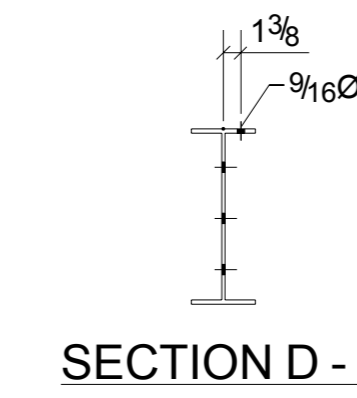
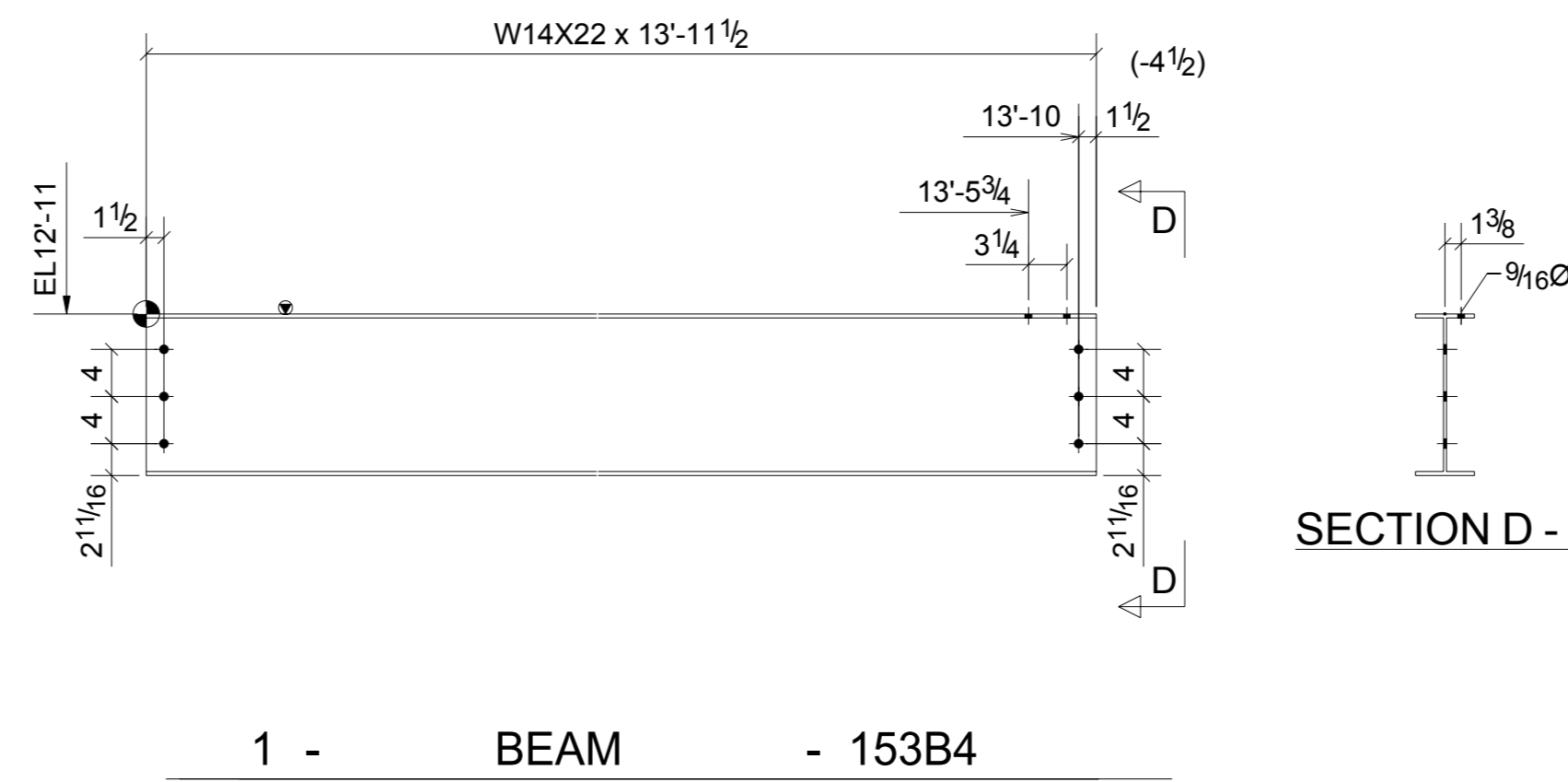


**BILL OF MATERIAL**

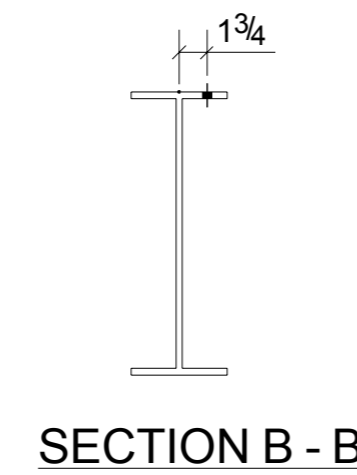
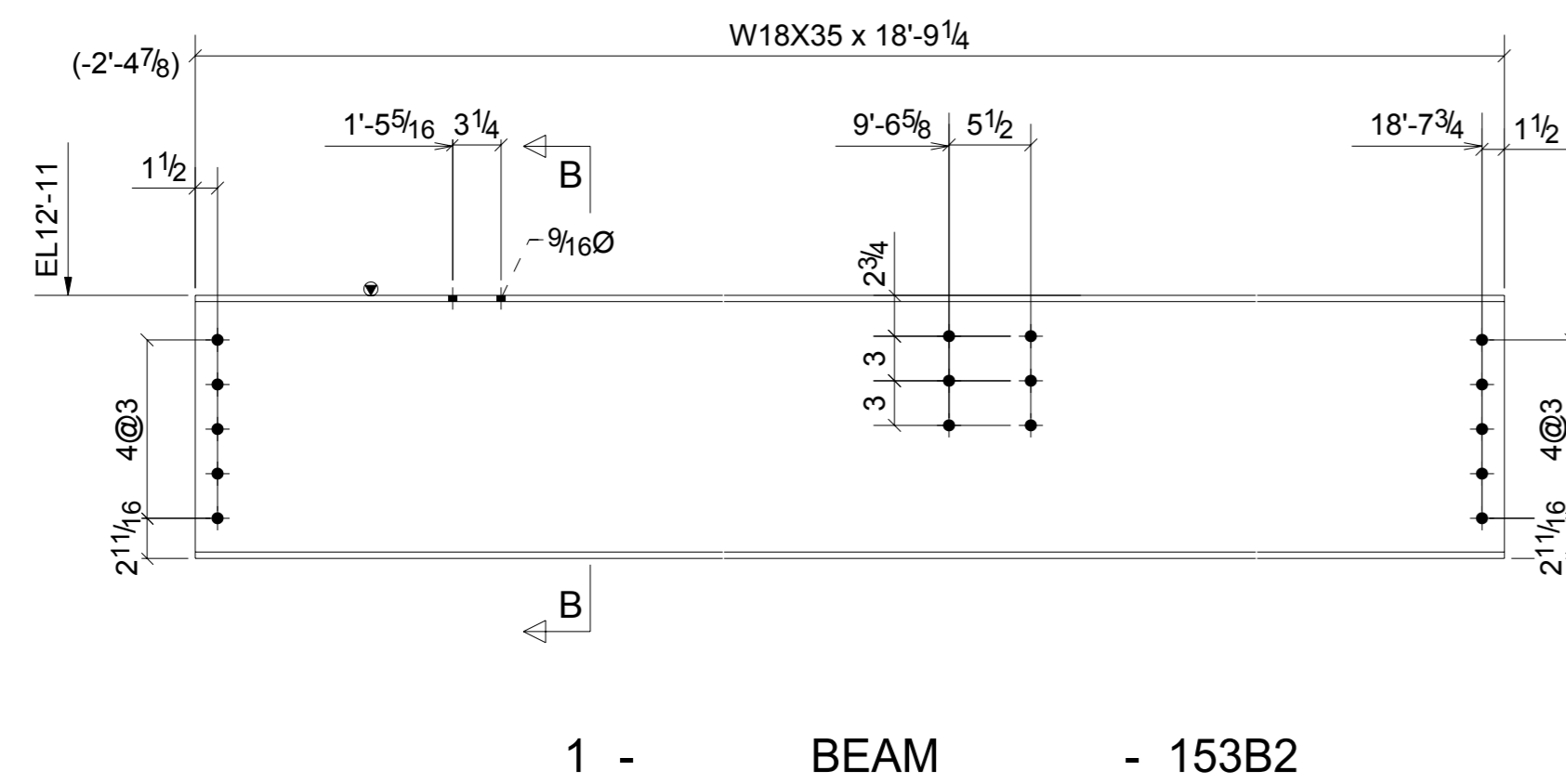
SHIP MARK	PIECE MARK	QTY	DESCRIPTION	LENGTH	REMARKS
		1	HSS12X6X1/4	18'-10 3/16"	A500-GR.B
	p1016	1	FL3/8"X11"	18'-10 3/16"	A36
		1	W18X35	18'-9 1/4"	A992
		1	HSS12X6X1/4	14'-0 7/16"	A500-GR.B
	p1012	1	FL3/8"X11"	14'-0 1/2"	A36
		1	W14X22	13'-11 1/2"	A992
		1	HSS8X8X1/4	14'-0 7/16"	A500-GR.B
		1	W14X22	12'-1"	A992



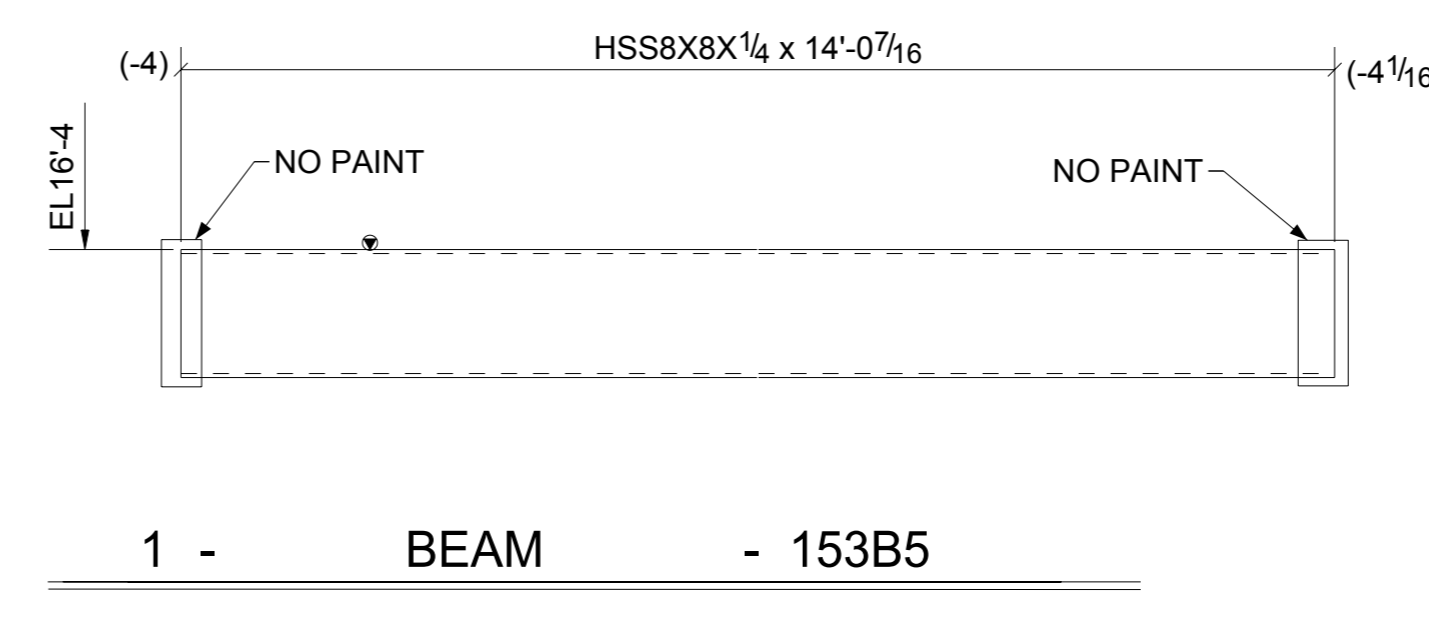
1 - BEAM - 153B1



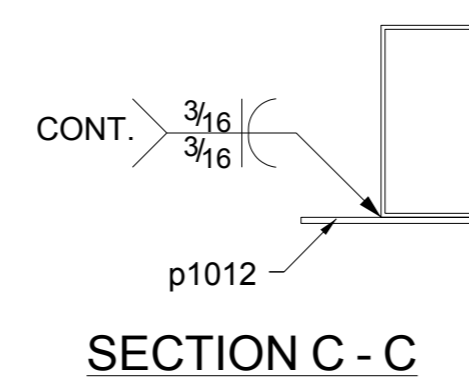
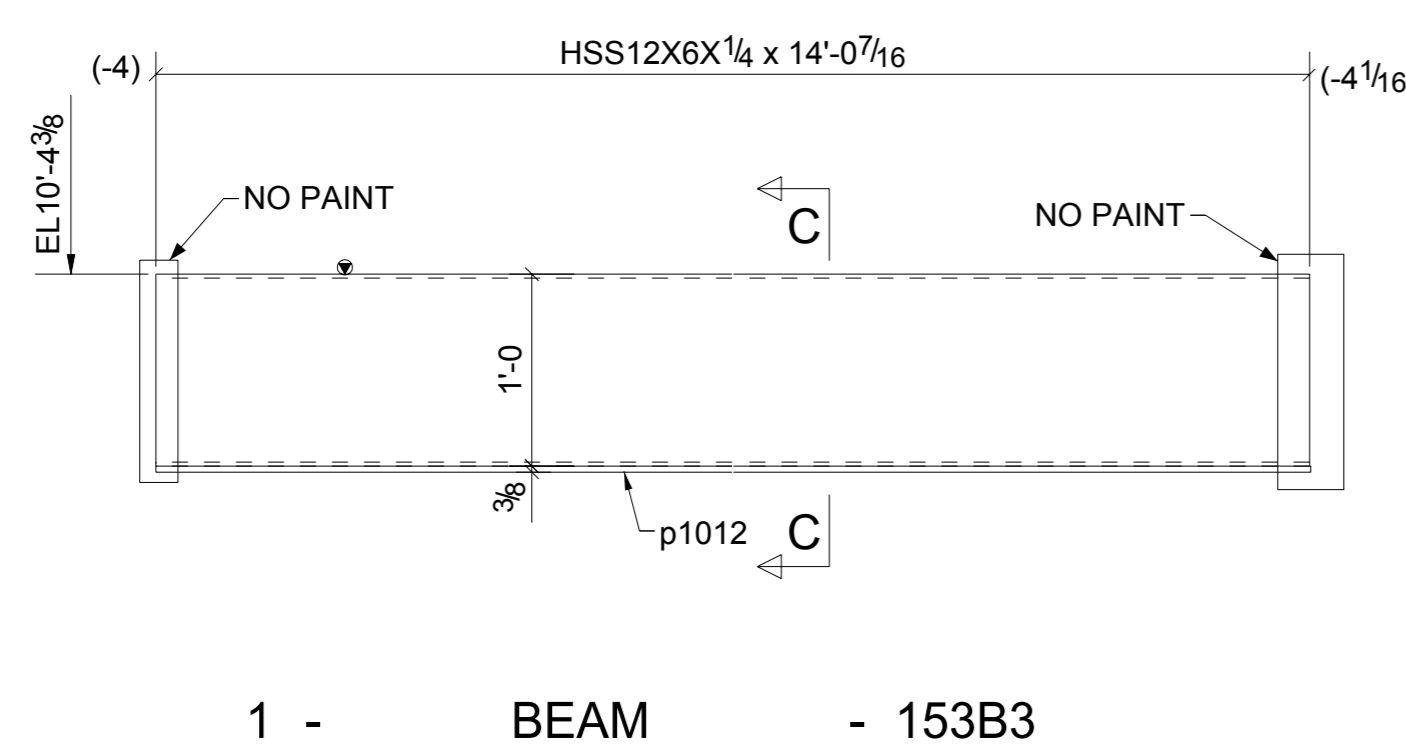
1 - BEAM - 153B4



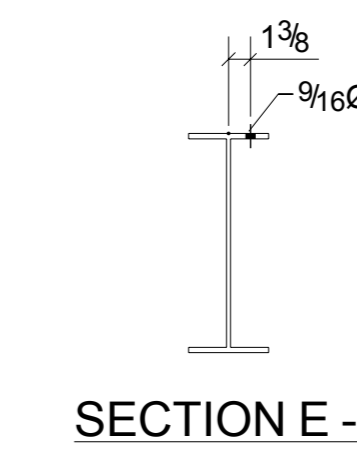
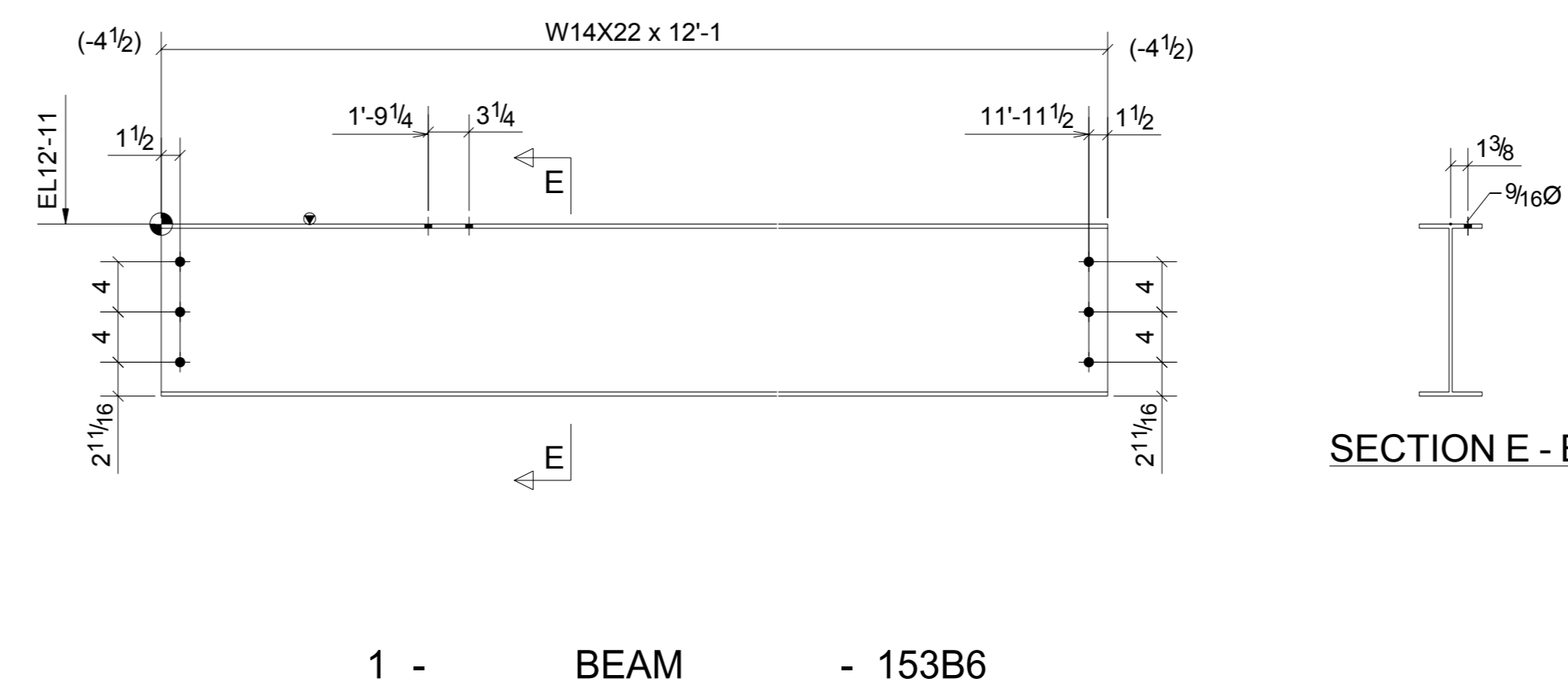
1 - BEAM - 153B2



1 - BEAM - 153B5



1 - BEAM - 153B3



1 - BEAM - 153B6

▼ DENOTES MARK END

SHOP NOTES	REVISIONS	CLIENT NAME
HOLES- 13/16" U.N.O. PAINT- ONE SC STD PRIMER SURFACE PREP. - SSPC-SP2	12/07/11	
WELD RODS- E70XX MATERIAL A36 (U.N.O) ALL 'W' SHAPES A992 TUBE A500 GR B		JOB NAME : CUSTOMER : MADE BY : _____ DATE : _____ ORD. NO. : _____ CHK'D BY : _____ DATE : _____ DWG. NO. : _____